

Enjoy your own piece of paradise!

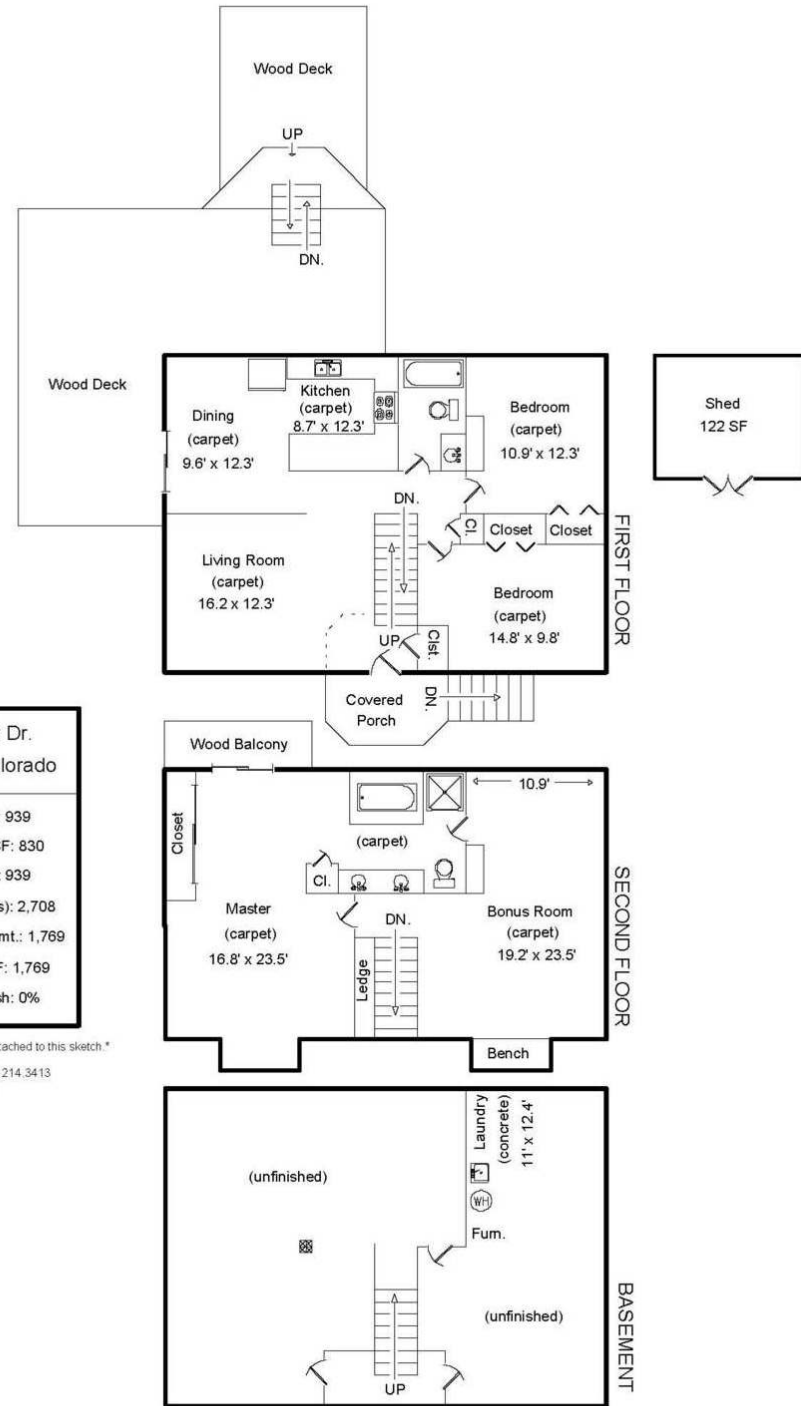


**5208 Gary Drive
Berthoud, Colorado 80513**

\$510,000



Kim Summitt
Broker Associate/Partner
(970) 689.6950 Cell
(970) 461.7142 Direct
(970) 663.0700 Office
ksummitt@thegroupinc.com



www.kimsummitt.com

Information herein deemed reliable but not guaranteed. Distance and measurements are approximate and subject to correction. See our listings at www.thegroupinc.com.



Lot Size 98,881
Approx Acres 2.27
Year Built 1987
Electric Poudre Valley REA
Water Little Thompson
Gas Xcel
Taxes/Yr \$2781/2017
Bedrooms 3
Bathrooms 2
Subdivision . Berthoud Estates
Style 2-Story
Construction Wood, frame
Floors Carpet, other
Heating Gas forced air

Inclusions - Refrigerator, stove,
dishwasher and microwave

Schools
Elementary Berthoud
Middle/Jr. Turner
High School Berthoud
District Thompson R2J



Bright and Open 2 Story Home

Nestled in the foothills outside of Berthoud finds this 3 bedroom 2 bath fully fenced 2 story home on 2.27 acres. Large master suite with private deck and soaking tub. Large deck over looks lots of perennials, trees and Foothills. Neighborhood backs to open space for hiking and horseback riding.

This is a must see property