

Adorable Patio Home in Macy Village!



*638 Moose Ct
Loveland*

\$305,000



Dave Trujillo
Broker Associate/Partner
970-222-0340 Cell
dtrujillo@thegroupinc.com





Freshly painted, refinished hardwood flooring, new tile on bathroom flooring, new carpet throughout and move in ready! This 2 bed, 2 bath patio home/duplex with 2 car attached garage also has an RV storage lot for the homeowners use. Vaulted ceilings, gas fireplace and a very nice back deck. Full unfinished basement with concrete vault, all you need is install the vault door. New roof in 2017. This small and clean community has an HOA fee that includes snow removal, lawn care and management. Pet restrictions only allow for 1 dog and 1 cat.

Lot Size 2,604
 Approx Acres 0.06
 Electric City of Loveland
 Water City of Loveland
 Gas Xcel
 Taxes/Yr \$1,182/17
 Bedrooms 2
 Bathrooms 2
 Subdivision Macy Village
 Style 1 Story/Ranch
 Construction Wood/Frame
 Floors Carpet, Wood, Tile
 Heating Forced Air
 Cooling Central Cooling

Inclusions

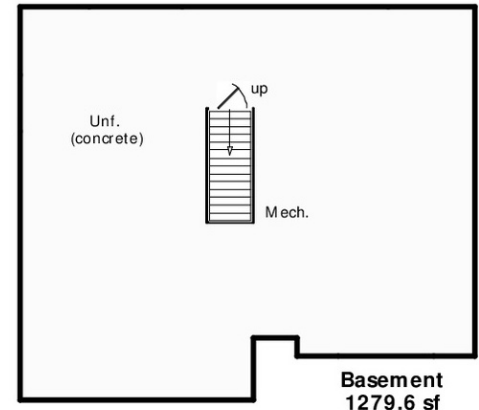
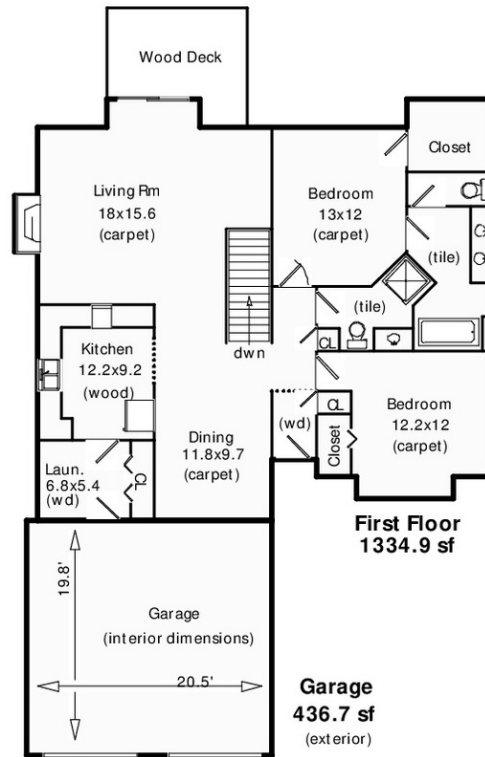
Window coverings, electric range/oven, dishwasher, refrigerator, microwave

Schools

Elementary Garfield
 Middle/Jr. Bill Reed
 High School Loveland
 District Thompson R2-J

Agent: Dave Trujillo
 Scope of work on our website
 www.appraisaldimensions.com
 (c) copyright
 5/18/2018

**638 Moose Ct.
 Loveland, CO**
Total Sq Ft: 2615
Total Finished Sq Ft: 1335
Finished w/ o Basement: 1335
Basement Sq Ft: 1280
Basement Finish: 0%



www.638Moose.thegroupinc.com



Information herein deemed reliable but not guaranteed. Distance and measurements are approximate and subject to correction. See our listings at www.thegroupinc.com.

