

New Luxury Wonderland Home



2544 Chaplin Creek Drive
Loveland

\$656,873



Josh Sturgis

Broker Associate/Partner, DES
970-556-5305 Cell
970-679-1590 Direct
jsturgis@thegroupinc.com



Matt Kurtz

Broker Associate/Partner, DES
970-962-4630 Cell
970-679-1648 Direct
mkurtz@thegroupinc.com





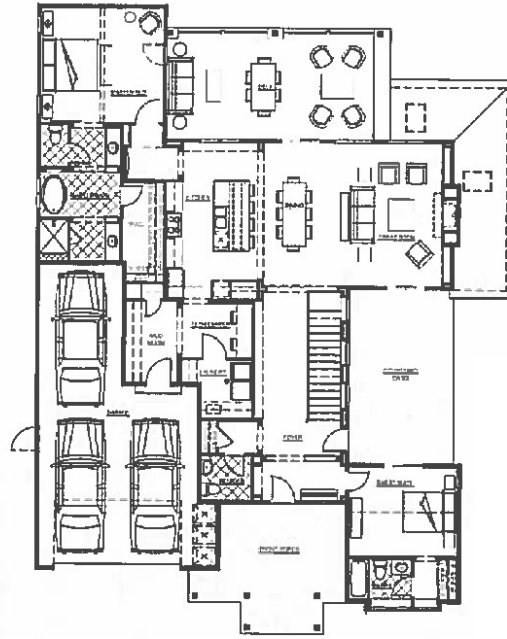
New Luxury Wonderland Home at the Lakes at Centerra.

Acadia Modern Farmhouse model with incredible upgrades and amazing views. Main floor with 2 large bedrooms, tech area, 2.5 baths, wood floors and luxurious kitchen. Finished walkout basement with 1 bedroom, rec room, 1 1/2 baths and access to landscaped yard. Deck with scenic views and private side patio. Three car garage, oversized laundry room and owners entry. Energy Star 3.0 certified & HERS rated.

MLS # 831064
 Lot SqFt 10,890
 Acres 0.25
 Elec City of Loveland
 Water City of Loveland
 Gas Xcel
 Taxes/Yr \$752 / 2016
 Bedrooms 3
 Bathrooms 5
 Subdivision . Lakes at Centerra
 Style 1 Story/Ranch
 Construction Wood/Frame,
 Brick/Brick Veneer
 Floors Carpet, Wood, Tile
 Heating Forced Air
 Cooling Central Air
 Conditioning

Inclusions
 Gas Range/Oven,Dishwasher,
 Microwave

Schools
 Elementary High Plains
 Middle/Jr. High Plains
 High School Mountain View
 District Thompson R2-j



MAIN LEVEL
2064 sq ft



**LANDING AT
BASEMENT LEVEL**
40 sq ft

<https://2544chaplincreek.thegroupinc.com/>



Information herein deemed reliable but not guaranteed. Distance and measurements are approximate and subject to correction. See our listings at www.thegroupinc.com.

